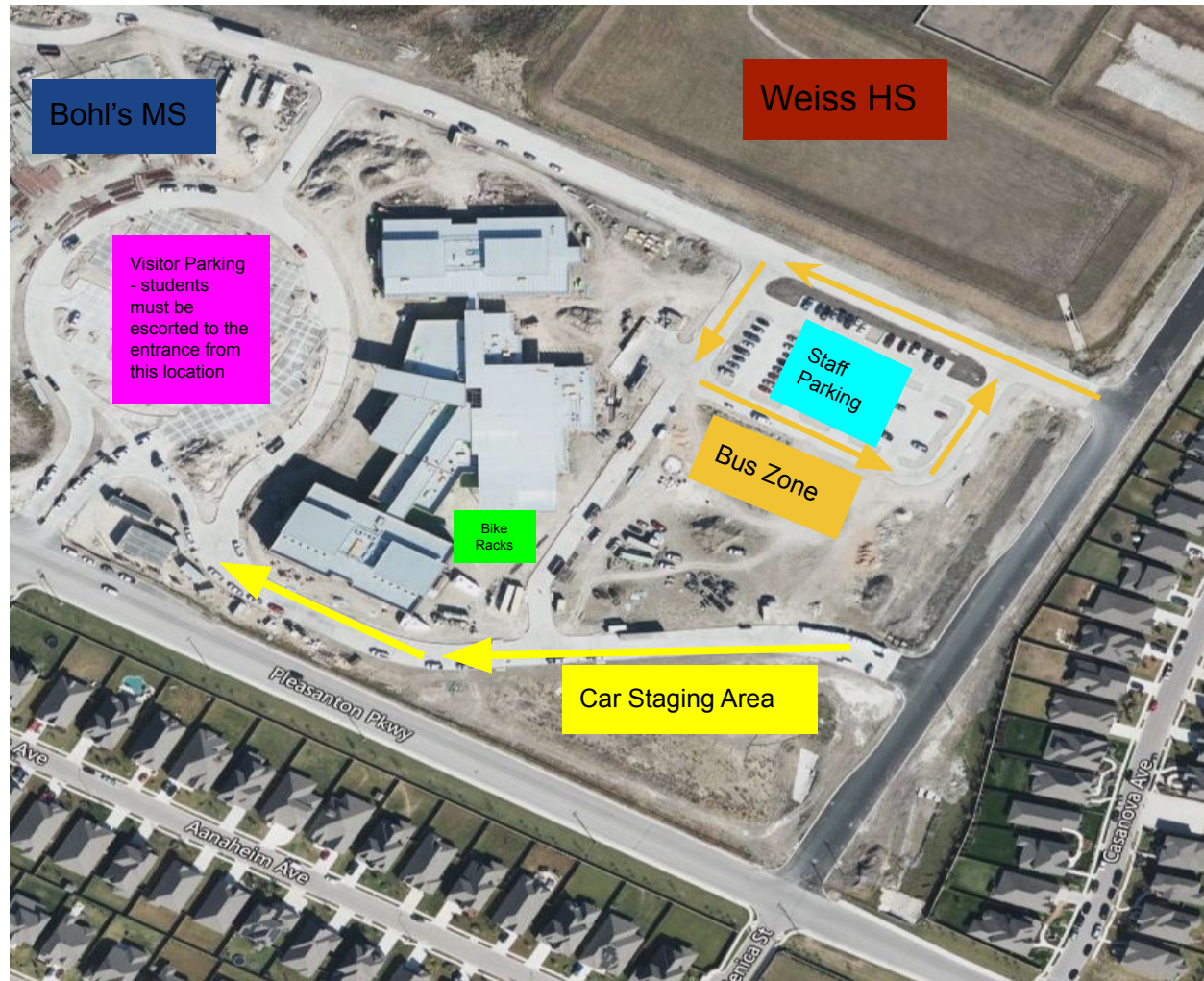


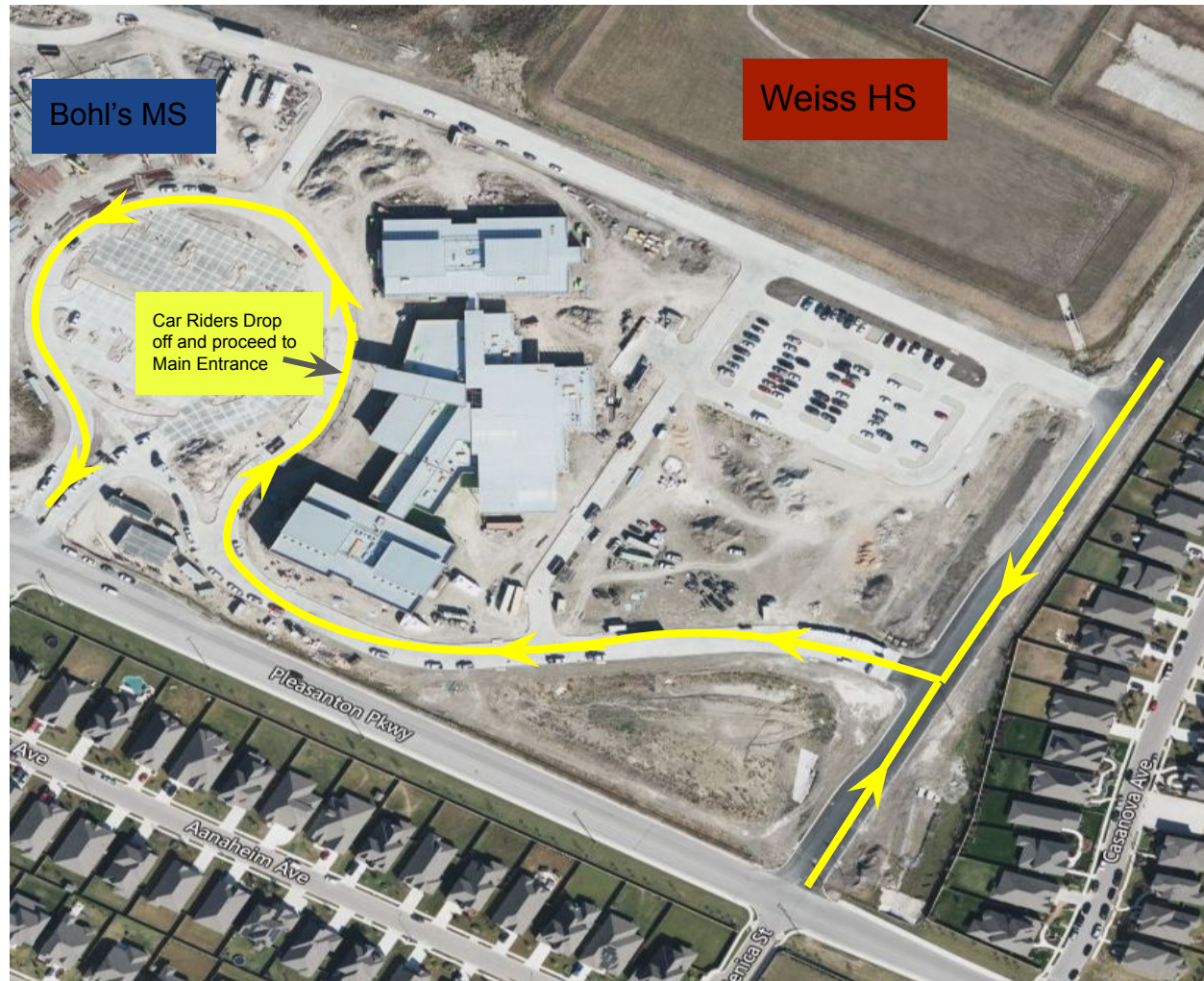
Arrival:

- If arriving between 7:45 and 8:20 all students will report to the cafeteria.
- students will report to their classroom.
- If arriving after 8:20, students need to report to the office for a pass..



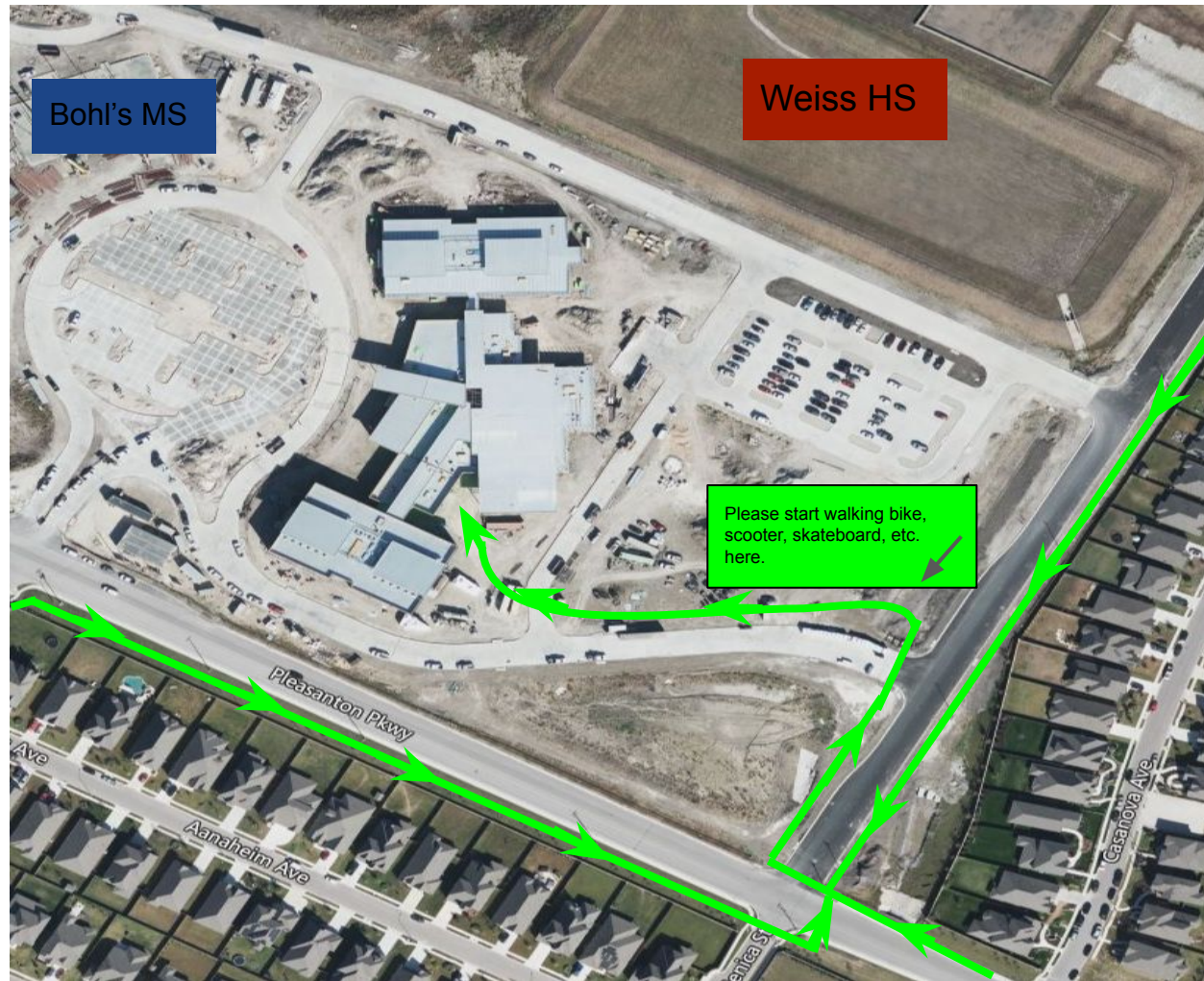
Car Rider Arrival:

- Student arriving by car to be dropped off at the front curb will enter the back street and proceed through the staging driveway to the front circle drive. Student will be dropped off in front of the building at designated cones. To exit, continue around the circle drive to Pleasanton Parkway.
 - If arriving between 7:45 and 8:20 all students will report to the cafeteria.
 - If arriving after 8:20, students need to report to the office for a tardy pass.
- Circular parking lot in front of the building is for visitor parking only. For safety purposes, please do not drop students off in the parking lot.



Biker/Walker Arrival:

- Students arriving by walking or biking will approach the building from the east (back) of the building using the crosswalks.
 - For safety purposes, please walk bikes, scooters, skateboards, etc. upon arriving at designated areas on school grounds (as noted in visual).
 - Please lock up all bikes and scooters at the bike racks.
 - If arriving between 7:45 and 8:20 all students will report to the cafeteria.
 - If arriving after 8:20, students need to report to the office for a tardy pass.



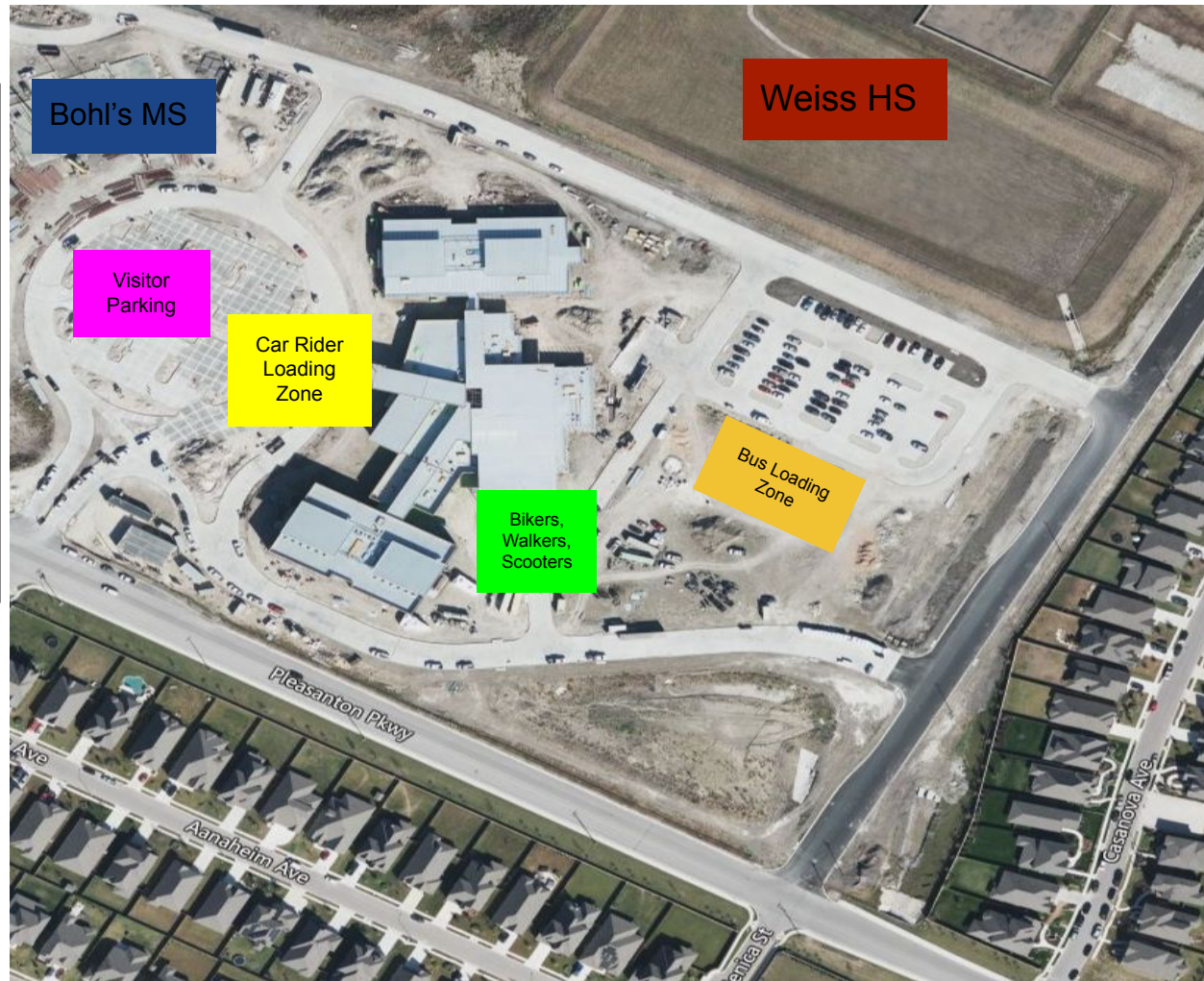
Dismissal of Students

Beginning of the year procedures:

- 3:35 Bus Riders
- 3:37 Car Riders
- 3:39 Biker/Walker/Parent Walk-ups

The same pathways will be used for Dismissal that are used for Arrival.

Please contact the office prior to 3:00 if you need to change your child's method of going home.



Dismissal Procedures:

Car Riders - Students arriving by car to be dropped off at the front curb will enter the back street and proceed through the staging driveway to the front circle drive. Students will be picked up in front of the building. To exit, continue around the circle drive to Pleasanton Parkway.

Walkers/Scooters/Bikers - Students leaving by walking or biking will leave the building from the east (back) of the building using the crosswalks. (See Bus, Walker, Arrival for routes)

Please contact the office prior to 3:00 if you need to change your child's method of going home.

