

# ***NO BULLYING ZONE***

## **Help Us Keep PflISD Safe for All Students**

### **According to Pflugerville ISD policy, bullying:**

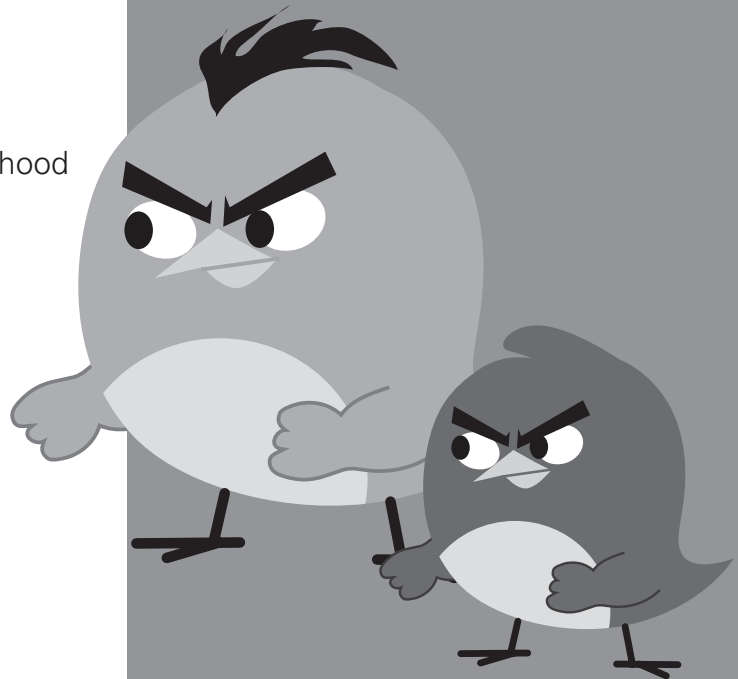
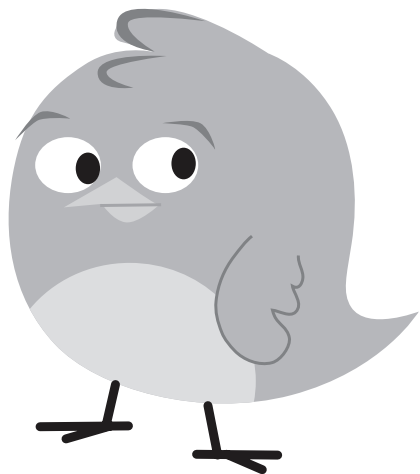
- Is physically harmful
- Damages a student's property
- Places a student in reasonable fear of harm

### **Bullying is:**

- Severe
- Persistent
- Pervasive
- Creating an intimidating, threatening or abusive educational environment
- An occurrence using a school district computer or during a school sponsored event

### **Bullying isn't:**

- Arguments
- Being mean
- An isolated incident
- An occurrence at home or in the neighborhood



*Bullying is prohibited and all accusations will be fully investigated. If the investigation concludes bullying occurred, students will be punished according to the PflISD Student Code of Conduct.*

*Even if a situation doesn't meet the legal definition of bullying, maintaining a safe learning environment is the district's top priority. Students and parents should report concerns to campus staff or online through the Anonymous reporting site [www.anonymousealerts.com/pflisd](http://www.anonymousealerts.com/pflisd).*

For more information about bullying visit [www.pflisd.net](http://www.pflisd.net) or contact the Department of Student Affairs at 594-0038.

